

Garden Rooms • Composite Decking • Composite Fencing • Balustrade Systems



Eco Friendly



UV Resistant



Weather Resistant



FSC Certified



Simple Installation

RONJACK

0161 803 0090
admin@ronjack.co.uk

www.ronjack.co.uk

GARDEN ROOMS
BY
RONJACK

 oakio

neular
the future of green

GARDEN ROOMS

By Ronjack



RONJACK

Our Products - Your Solution

Welcome to Ronjack

SUPPLIER OF GARDEN AND LANDSCAPING PRODUCTS

Our team has years of experience in garden landscaping, design and manufacturing, helping to create stunning gardens across the UK. Our collection of superior garden products are designed with family life in mind, whilst being easy to install.

INTRODUCING THE ALL NEW SEYMOUR COLLECTION

Finding the perfect alternative to a conservatory seems like a long & impossible task. You want something that is aesthetically pleasing, easy and simple to install and doesn't want the task of maintaining or treating it constantly.

Manufactured using co-extruded WPC, creating a low maintenance, low price point and quick and easy alternative to existing timber structures. Ronjack's exclusive collection of robust, maintenance-free garden buildings is the solution.

Comes complete with single glazed aluminium fully lockable French doors and wall caps for a seamless finish. For added weather resistance and longevity you can opt to upgrade your garden room with a rubber roof.



The Seymour



The Seymour Deluxe

Simple installation

Our garden room ranges are pre-fabricated and can be installed within just 1 day with minimum tools required. They go through a long and extensive manufacturing process in order to reach perfection. The composite wallboards are moulded, dyed, treated with antifungal agents and finished with additives to reduce damaging effects from UV rays and other weather, before being pre-cut for ease of installation.



The Seymour



The Seymour Deluxe

What is it made with?

The Seymour Collection is made with 60% recycled wood, 35% high density Polythene & 5% Additives.

What Makes this different to other garden buildings?

The use of high density polyethene's mean that the components have a higher strength and stiffness to traditional resins of garden buildings.

Maintenance Free?

Absolutely! The Seymour Collection goes through a long & extensive manufacturing process in order to reach perfection. The composite wall boards are moulded, dyed, treated with antifungal agents and finished with additives to reduce damaging effects from UV rays and other types of typical British weather and then Pre-Cut for ease of installation.

RONJACK



Eco Friendly



UV Resistant



Weather Resistant



FSC Certified



Simple Installation

The Seymour



- Building Dimensions: 3170 mm x 3170 mm
- Floor Area: 2900 mm x 2900 mm
- French outward opening double doors
- Glazed
- Sloped roof
- Weight: 650 kg
- Build in 5 hours (2 person)
- 10m² surface
- No paint or stain required
- Up to 95% recycled
- UV and weather resistant

EXCLUSIVE
PRODUCT

INSTALL IN
5
HOURS

The Seymour Deluxe



- Building Dimensions: 6050 mm x 3050 mm
- Floor Area: 5510 mm x 2900 mm
- French outward opening double doors
- Glazed
- Sloped roof
- Weight: 1,100 kg
- Build in 8 hours (2 person)
- 18.5m² surface
- No paint or stain required
- Up to 95% recycled
- UV and weather resistant

EXCLUSIVE
PRODUCT

INSTALL IN
8
HOURS

The Janssen



- Building Dimensions: 2950mm x 2950mm
- Floor Area 3790mm x 3410mm
- French outward opening double doors
- Glazed
- Apex Roof
- Weight: 680kg
- Build in 5 hours (2 person)
- 12.9m² surface
- No paint or stain required
- Up to 95% recycled
- UV and weather resistant

EXCLUSIVE
PRODUCT

INSTALL IN
5
HOURS

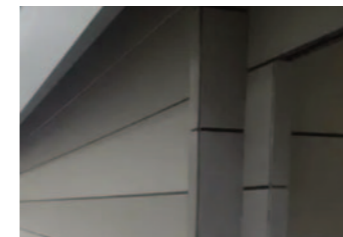
What's Included?

Our Garden Room Collection is complete with all accessories that are required for a maintenance free finish. Here's what is included:

- A 100% Recyclable material, easy to install
- Interlocking, modular composite wallboards
- End caps to cover the hollow connecting sections
- Glazed French doors complete with locks & keys for added security

Specifications

Manufactured Co Extrusion WPC



Inner Core: 58% Timber,
32% HDPE, 10% Additives.



Outer Shell:
Made using modified PE.



Aluminium support beams included
for added structural strength.



Aluminium air vents to prevent
condensation build-up.

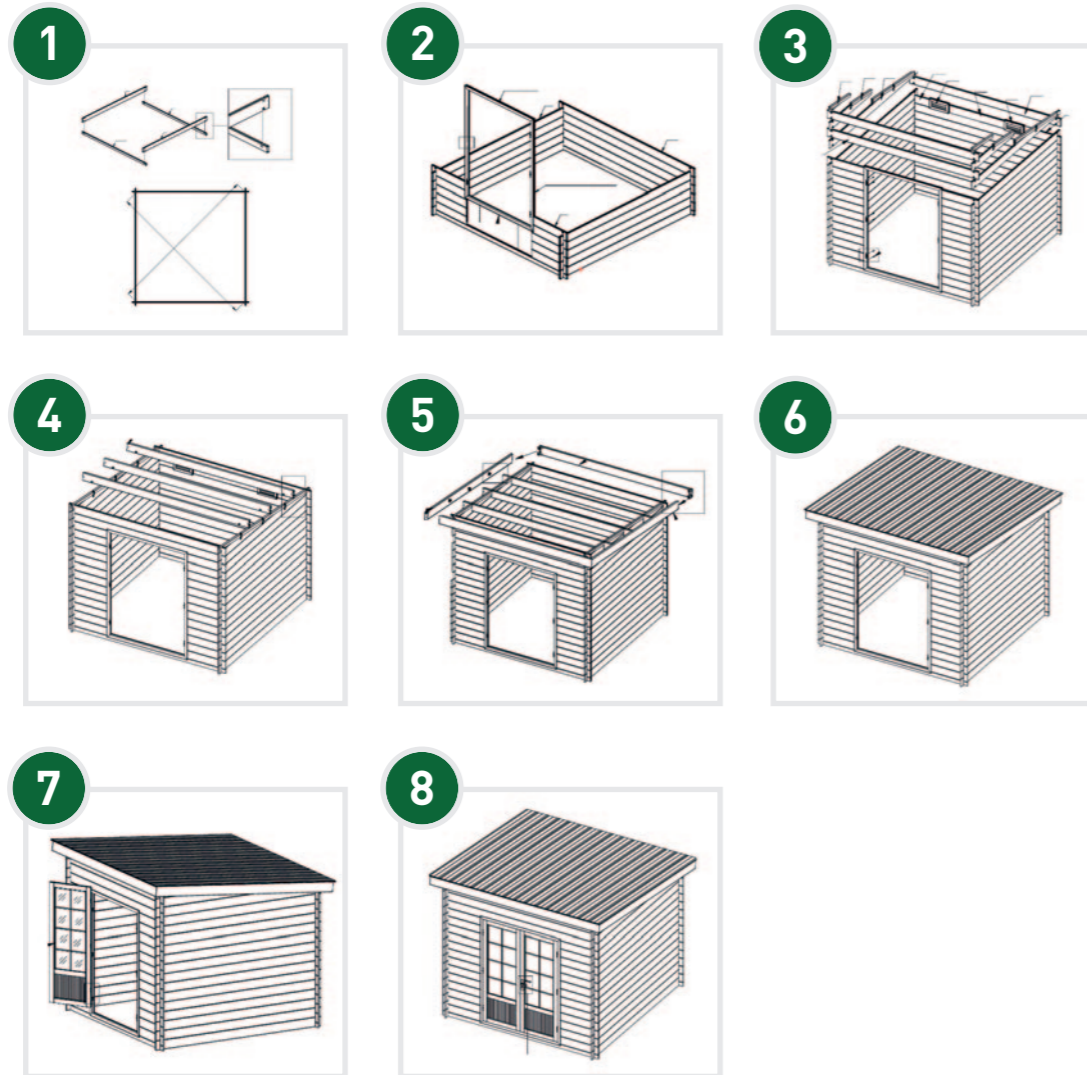


Made with recycled poplar
hardwood.



Double glazed fully lockable
aluminium French doors.

Installation



RONJACK

Ronjack composite products are a great choice for any garden and the environmentally friendly option. We use a mixed wood powder and recycled plastics, using up to 95% recycled and waste materials in its production.



Forest Stewardship Council - FSC certification ensures that products come from responsibly managed forests that provide environmental, social and economic benefits.



Conformity with health, safety, and environmental protection standards for products sold within the European Economic Area.

The nature-friendly choice